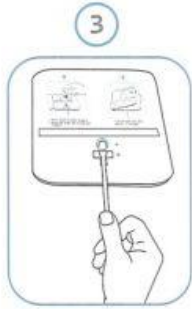




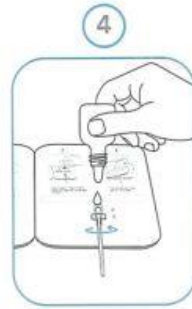
Use swab to collect sample



Peel off adhesive



Insert swab from well B to well A



a. Add 6 drops of buffer to well A
b. Rotate the shaft, two rounds each direction



Fold left side over, and wait for 15 minutes



Reacting Area



BEIJING LEPU MEDICAL TECHNOLOGY CO., LTD.

Building 7-1 No.37 Chaoqian Road, Changping District, Beijing, 102200, P.R.China

Tel: +86-10-80123964

Email: lepuservice@lepumedical.com

Web: en.lepumedical.com

CE IVD LEPU Medical (Europe) Cooperatief U.A.

Abe Lenstra Boulevard 36,8448 JB, Heerenveen, The Netherlands

Tel: +31-515-573399

Fax: +31-515-760020

For further information please refer to user manual

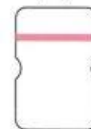


(+)



Positive

(-)



Negative

LOT 21CG2702X

22/01/2021

22/01/2022



SARS-CoV-2 Antigen Rapid Test Kit

(Colloidal Gold Immunochromatography)

